



## *SCOPE - Your Print Management Partner*



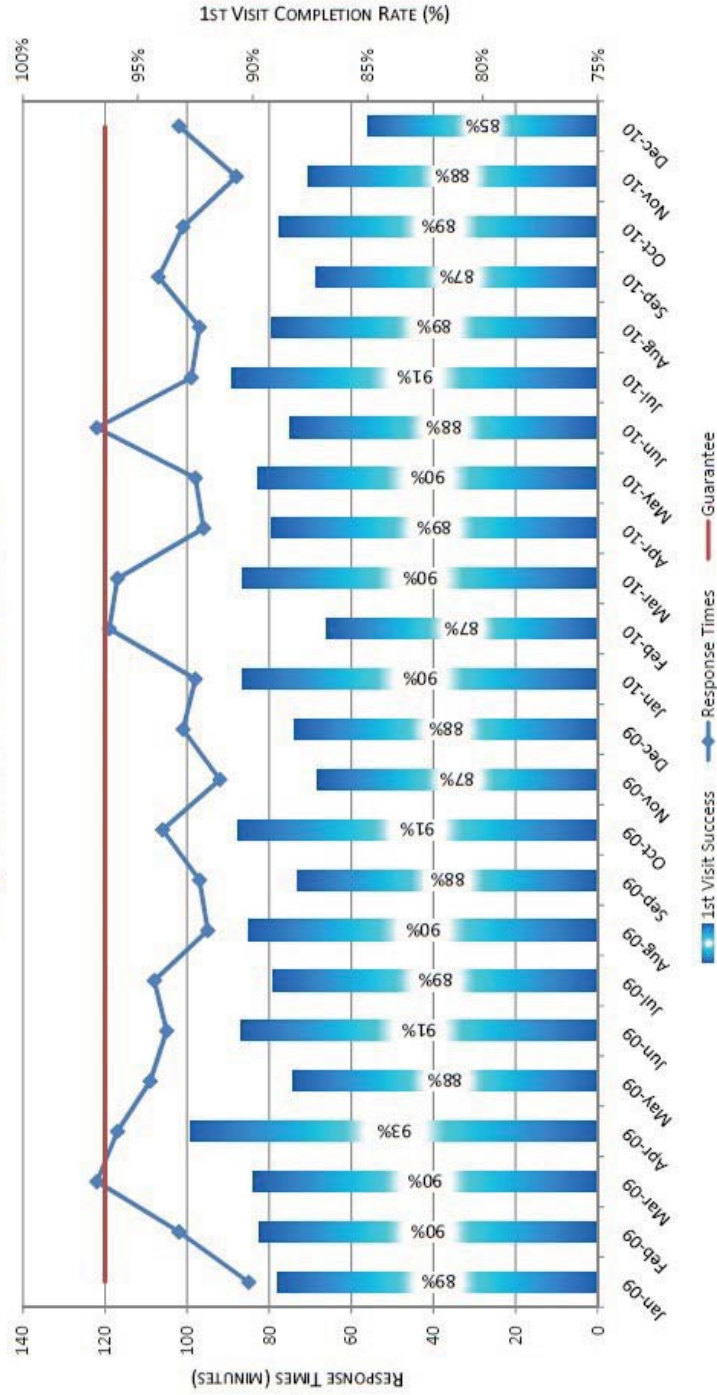
## Product Range 2011

**Intelligent Archive & Print Systems**

SCOPE Business Imaging - Perth

# RESPONSE TIMES & 1ST VISIT SUCCESS RATES

Average contract response time for December 2010 - 102 mins  
 Average contract response time over last 24 months - 103 mins  
 Average 1st visit success rate over last 24 months - 89%



# Introducing SCOPE business imaging

## INTELLIGENT ARCHIVE & PRINT SYSTEMS

Digital technology is advancing rapidly and companies are demanding increased efficiency in the management of their document production, output and storage. We are able to provide a comprehensive analysis of a business' needs based on an extensive assessment of their current systems.

We pride ourselves on providing a range of services that meets the demanding needs of the current market including:-

- Business analysis of document print systems
- Print Management Solutions
- Provision of state-of-the-art print devices and associated consumables
- Exclusive Training and Support
- Comprehensive Service and Support Agreement

We work directly with our customers to maximise the results and efficiency of our products.

## LOCALLY OWNED & OPERATED

Since our inception in 1986, SCOPE business imaging has been dedicated to its vision of providing superior sales consultancy and servicing for office equipment including multifunction printers and document management. SCOPE business imaging is Konica Minolta's only authorised "Diamond Dealer" in Western Australia and is a locally owned and operated business.

## SERVICE

We are locally based in Perth and Bunbury, Western Australia. No 1800 numbers. No Eastern State time zones to take into consideration. Speak directly to our friendly Service Department. Our logistics team stock a vast range of spare parts and consumables for our entire range of products, thus minimising repair time.

## RESPONSE TIMES

**SCOPE consistently provides the fastest service response of all  
Printer/Copier companies in Perth - ALL OF THE TIME!**

We provide onsite attendance within an average of 2 business hours of a fault being reported to our Perth Service Department. Our statistics can verify an average response time over the past 24 month period of 103 minutes per fault call **with an average 1st Visit Success rate of 89% to contract Customers.**

## PREVENTATIVE MAINTENANCE

We provide remedial and preventative maintenance in accordance with manufacturer recommendations. We replace parts at the end of the recommended lifespan regardless whether they are faulty or not.

## CONNECTIVITY

We provide maintenance and support for connectivity and facsimile subsystems, including raster image processor, print controller, network interface, embedded fax componentry and the standard software products supplied with your machine.

## PRODUCT TRAINING

We provide product training (free of charge) at the time of installation – up to 2 hours for colour machines and up to 1 hour for monochromatic machines. Any additional training can be booked through our Training Department.

## HELP DESK

We can provide telephone assistance with regards to any product and software supplied with your Konica Minolta, Lexmark or Hewlett Packard product.

---

# Production Print Systems

## bizhub C652DS

With an impressive speed of 50 colour and 65 black and white pages per minute, the bizhub C652 promises speedy colour production as well as productive black and white printing and is perfectly suited for high volume printing and copying anywhere.

Whether it enhances existing production facilities or takes the place of outdated black and white devices, the bizhub C652 offers highly productive yet affordable black and white printing and copying. Its outstanding black and white quality is due to the fact that in the bizhub C652 Konica Minolta's advanced colour imaging technology is also applied to black and white reproduction.

- High-speed 156ppm network scan function included
- Security features that restrict access providing data encryption and usage tracking
- All cassettes feed up to 256gsm with a paper capacity of 6,650 sheets
- The multiple bypass tray holds up to 300gsm thick paper
- 100 Sheet automatic document feeder
- Automatic Duplex Unit
- 20 sheet saddle stitch booklet and trifold finisher
- Large full colour touch screen control panel
- Warm up time: Less than 30 seconds



## bizhub C552

The new bizhub with InfoLine design embraces bizhub's philosophy of change. The bizhub C552 builds on the fundamentals of existing bizhub models to bring you a stylish and technologically superior office tool unlike anything you've seen before.

Powered by its three "Core Elements", Communication Technologies, Design and Engineering and Open Platform, the bizhub C552 promises to keep information flowing more easily and seamlessly through your office's network, offers the flexibility you require with your office's existing IT infrastructure and provides a surprisingly elegant design that will surely complement any office decor. In short, the C552 promises to change the way you do business forever.

- Excellent print speed at 55 black and 45 colour prints per minute
- High-speed 70ppm network scan function
- Standard controller, PCL6 and PS3 emulation, 1800 dpi equivalent x 600 dpi
- Security features that restrict access providing data encryption and usage tracking
- All cassettes feed up to 256gsm with a paper capacity of 6,500 sheets.
- Optional 3,000 sheet side paper deck
- Large full colour touch screen control panel
- 20 sheet saddle stitch booklet and trifold finisher



# Colour Multifunctional Systems

## bizhub C452

The minimalist approach of the C452's InfoLine design ensures that information is easy to find, convenient to access and intuitive to use.

Offering flexible document handling, efficient data distribution and fast versatile output, the bizhub C452 helps streamline workflow in offices that use both colour and black and white documents.

- Print speed at 45 colour and 45 black sheets per minute
- High speed 70ppm network scan function
- 100 sheet automatic document feeder
- Optional 3,000 sheet side paper deck
- 50 sheet staple finisher



## bizhub C360

The bizhub C360 is a networked, full colour MFP that enables you to store, distribute, share, manage, convert and output documents all in one place. Its high quality, high speed document output maximises efficiency and creates brilliant documents in vibrant colour or crisp monochrome.

- Print speed at 36 colour and 36 black sheets per minute
- High speed 70ppm network scan function
- 50 sheet staple finisher with network print mail bin
- 2, 3, 4 hole puncher
- Banner printing 1200mm x 297mm
- All cassettes feed up to 256gsm

# Colour Multifunctional Systems

## bizhub C280

The Konica Minolta bizhub C280 has a bold new design that puts high-speed multifunction power at the hub of your business. A large color touch-screen control panel makes operation quick and easy, including thumbnail preview of documents. And with powerful fax, finishing and paper capacity options, you can design a right size solution for your workflow.

- 28 sheets per minute in colour and black and white
- Security features that restrict access, provide data encryption and track usage
- High speed 70ppm network scan function
- 50 sheet staple finisher with network print mail bin
- 2, 3, 4 hole punch
- Optional Faxing



## bizhub C220

For departments, workgroups and small-to-mid-sized offices with growing workloads, the Konica Minolta bizhub C220 provides the document-handling power of systems that cost far more. Its bold new design combines sleek styling, a small footprint, InfoLine status display and a large color touch-screen control panel to make printing, scanning and sharing information easier than ever.

- 22 sheets per minute in colour and black and white
- High speed 70ppm network scan function
- 50 sheet staple finisher with network print mail bin
- All cassettes feed up to 256gsm
- Banner printing 1200mm x 297mm





## **bizhub C35**

This compact multifunctional colour and b/w printer leaves little to be desired when it comes to everyday office tasks—and surprisingly economic to use.

Its compact and stylish design as well as its generous functionality makes it an asset in every office.

- 30 sheets per minute in colour and black and white
- 30 sheets per minute scanning
- Automatic duplexing document feeder
- Faxing

## **Colour & Monochrome Printers**



## **bizhub 40P**

In the new bizhub 40P, Konica Minolta has combined high black and white productivity with a compact construction. Flexibility is an added asset in this exceptional printer that comes in different configurations to suit the diverse needs of busy workgroups.

- 43 sheets per minute black and white
- First print time: 9.5 seconds
- Warm up speed: 20 seconds
- Optional automatic duplexing
- Up to 4 paper cassettes with 1800 sheet maximum paper supply

# Monochrome Multifunctional Systems



## **bizhub 751**

The Konica Minolta bizhub 751 is a true workflow powerhouse - allowing even the busiest office, department or workgroup to move information faster, output documents on demand, maintain control and security and increase productivity whilst containing costs.

- 75 (A4) sheets per minute
- Paper sizes A5-A3
- Print/Copy/Scan/Fax\*
- First copy speed: 2.9 seconds or less
- Warm up time: 5 minutes or less
- 2400 x 600 dpi with smoothing

## **bizhub 601**

For busy offices, departments and workgroups, the Konica Minolta bizhub 600 is an all-in-one productivity solution - a central document resource that moves information faster, outputs documents on demand, maintains control and security and increases productivity whilst containing costs.

- 60 (A4) sheets per minute
- Paper sizes A5-A3
- Print/Copy/Scan/Fax\*
- First copy speed: 3.3 seconds or less
- Warm up time: 4.5 minutes or less
- 2400 x 600 dpi with smoothing (PCL UPS)



## **bizhub 501**

Finally an intelligent 50 cpm/ppm MFP that boosts office productivity and streamlines workflow. The bizhub 501 will give you reliable document handling together with real-time idea sharing capabilities, making your workflow fast and efficient while keeping important information safe. With remote-access capabilities it will let you stay connected and in control when business takes you around the world.

- 50 (A4) sheets per minute
- Paper sizes A5-A3
- Print/Copy/Scan/Fax\*
- First copy speed: 3.6 seconds or less
- Warm up time: 30 seconds or less
- 600 x 600 dpi



# Monochrome Multifunctional Systems

## bizhub 423

For an office that needs 42ppm (A4) copying and secure networking capabilities, the high performance bizhub 423 is the natural choice.

Even with multiple projects moving at once, it gives everyone on the network the flexibility they can count on, while keeping important data safe and secure. Stay connected, be creative and let ideas flow freely.

With its excellent handling, versatile finishing features and optional printing and faxing, the bizhub 423 is perfect for a productive networked and cost-conscious business.

- 42 (A4) sheets per minute
- Paper sizes A5-A3
- Print/Copy/ Full Colour Scan/Fax\*
- First Copy Speed: 4 seconds or less
- Warm-up Time: 60 seconds or less
- 600 x 600 dpi



## bizhub 363

Drive your office at 36 ppm and empower information sharing with this all-in-one MFP.

Ideal for large and mid-sized businesses, busy workgroups, branch offices and growing traffic needs, it provides 36 ppm output with hard working reliability.

- 36 (A4) sheets per minute
- Paper sizes A5-A3
- Print/Copy/Full Colour Scan/Fax\*
- First copy speed: 4.8 seconds or less
- Warm up time: 14 seconds or less (aux. power)
- 600 x 600 dpi

# Monochrome Multifunctional Systems

## Bizhub 283

The bizhub 283 has a wide array of optional finishing units allowing you to produce professional looking, high quality documents that will increase the value of your output immeasurably.

In addition to sorting and grouping, folding, hole punching and stapling are possible.

- 28 (A4) sheets per minute
- Paper sizes A5-A3
- Print/Copy/Full Colour Scan/Fax\*
- First copy speed: 4.8 seconds or less
- Warm up time: 14 seconds or less (aux. power)
- 600 x 600 dpi



## bizhub 223

This 22ppm MFP is designed to keep information flowing throughout your workgroup.

Its speed and workhorse reliability make it a perfect fit for mid-sized companies, departments, branch offices and workgroups that need sharp black & white documents.

- 22 (A4) sheets per minute
- Paper sizes A5-A3
- Print/Copy/Full Colour Scan/Fax\*
- First copy speed: 5.3 seconds or less
- Warm up time: 14 seconds or less (aux. power)
- 600 x 600 dpi

# Facsimile

## 2900 Facsimile

This multifunctional laser fax is a simple, cost effective solution for low volume and mid volume traffic. With high speed Super G3 33.6 Kbps fax transmission, fast 16 pages per minute print/ copy output and TWAIN colour scanning, this is a versatile small office departmental fax solution.

- 16ppm printing and 2.5 seconds per page scanning
- Up to 600dpi resolution
- Standard 16Mb Memory allowing you to store up to 350 fax pages
- 250 sheet cassette with an option 500 sheet paper cassette
- Advanced fax functions for autodialing and one-touch dialing
- Scan documents directly to your PC with TWAIN colour scanning



## 3900 Facsimile

This astutely designed unit accomplishes numerous tasks allowing you to consolidate all of your communication needs. By also being a network hub, the fax cuts down on the transfers you need to make with any given document. This unit will reduce cost and optimize communication at the same time.

Another highly effective feature is the internet fax function which lets you send and receive faxes over the internet. This function will reduce transmission fees, allowing you to accomplish the same tasks for less cost.

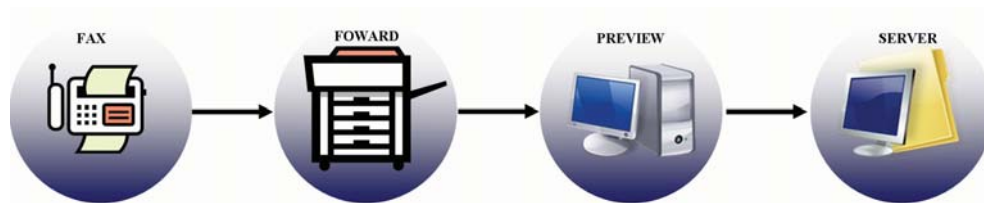
- 16ppm printing and 2.5 seconds per page scanning
- Up to 600dpi resolution
- Standard 16Mb Memory allowing you to store up to 350 fax pages
- 250 sheet cassette with an option 500 sheet paper cassette
- Advanced fax functions for autodialing and one-touch dialing
- Scan documents directly to your PC with TWAIN colour scanning
- Network GDI printing, network scan and an optional upgrade to 48MB memory, allowing you to store up to 1,024 pages

# Software Solutions

## SCOPE Fax Filer

Exclusive to SCOPE business imaging, user-friendly Fax Filer software takes control of your incoming faxes once they have been sent to the network. Fax Filer allows easy viewing, printing, archiving to specified folders and emailing using Outlook or Outlook Express.

Installation is not limited to one PC. With Fax Filer you have the option of disabling the printing of incoming faxes, which in turn saves paper and associated costs. Fax Filer comes with our range of Konica Minolta bizhub Digital Systems, where the Fax Kit has been installed.

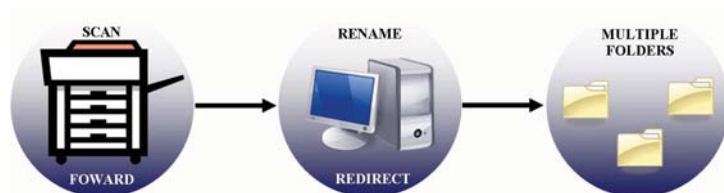


## SCOPE Document Filer

Exclusive to SCOPE business imaging. The Document Filer software allows your scanned documents to be immediately saved and archived into the selected Folders. This software is best utilised when your documents are scanned to a central location and then, using Document Filer, the document can be separated, renamed and redirected to the appropriate network folder.

With additional licenses, each workstation can have Document Filer installed and a scan folder created, so the user can file their own documents quickly and easily.

Document Filer is an excellent option when scanning files to folder for automatic archiving onto the network.



## SCOPE OCR

A user-friendly desktop scanning solution, SCOPE OCR is designed to increase productivity and promote information and document collaboration. It provides basic document management with optical character recognition (OCR), and desktop delivery for document transfer from network scanning devices. It is compatible with all Konica Minolta scan-enabled multifunction devices.

### Features

- Scan documents into Word, Excel or Audio File with a press of one button.
- Compress PC documents into PDF files so you can view and print them safely.
- Save time and effort with award-winning optical character recognition.
- Capture documents easily and affordably with drag-and-drop links to popular content.
- Turn all PDF files into identical documents that you can edit.

# Software Solutions

## SCOPE Archiving

SCOPE Archiving is a user-friendly suite of professional applications for organizing, editing, retrieving, archiving and sharing documents that integrates into your current software applications and business processes.

SCOPE Archiving is designed to increase productivity and promote information and document collaboration. It provides basic document management with optical character recognition (OCR), and desktop delivery for document transfer from network scanning devices. It is compatible with all Konica Minolta scan-enabled multifunction devices.

## Features

- Create PDF's from paper files and reduce filing, copying and storage costs
- Process and archive documents easily using the PDF standard
- Access important information wherever you go and make it instantly available to your organization
- Convert 'static' or scanned PDF files into searchable, editable PDF files—add notes, annotations, stamps and watermarks
- Files can be secured making sure sensitive information remains protected and confidential
- Scan documents into Word, Excel or Audio File with a press of one button
- Organize and manage all your PC files in one powerful filing system
- Compress PC documents into PDF files so you can view and print them safely
- Save time and effort with award-winning optical character recognition
- Capture documents easily and affordably with drag-and-drop links to popular content
- Turn all PDF files into identical documents that you can edit



Scan documents on your bizhub MFD, convert them to searchable PDF and deliver them to SCOPE Document Filer for filing directly to your network

# Our Environmental Policy

SCOPE business imaging is an independently owned and operated West Australian company. We are Konica Minolta's only authorised "Diamond Dealer" in Perth. We are leaders in our field and set new standards in after sales service and support. We are a supplier of photocopy and printing equipment to the Perth metro and Bunbury areas.

Our Environmental Policy focuses on the current need to 'reduce, re-use and recycle'. We have put in place the following to minimise environmental pollution.

**Reduce** We offer our clients equipment that allows double-sided copying and printing. By offering these products we are helping reduce the amount of paper used by clients. We also encourage our clients to use high quality plain white and recycled paper in our equipment at all times. Using high quality paper reduces paper jamming and faults within the machine, thus reducing the need to reprint and unnecessarily replace parts in the equipment.

**Re-use** We encourage all staff within our organisation to use waste paper for other purposes, such as writing notes, telephone messages etc. By re-using our waste paper, we are helping reduce landfill.

**Recycle** We encourage our staff and clients to recycle. Within SCOPE, we recycle all cardboard, paper, plastics, metals and polystyrene using local recycling companies. We use "Cartridges 4 Planet Ark" recycling bins to recycle imaging consumables. All our clients are offered the option to return their used imaging consumables to SCOPE for recycling. By recycling all by product of our equipment, we are assisting in reducing landfill and the output of general waste.

It is our objective to continually evaluate and manage our internal processes.

***"Konica Minolta's Simitri Polymerized Toner achieves an approximate 40% reduction in CO2 emissions during production, as compared with toners produced by conventional pulverization methods".***

***Over 18 million printer consumables are used by Australians per year!***

Up to 80% of imaging consumables are thrown to landfill each year. Cartridges 4 Planet Ark was launched to capture and recover these potentially hazardous wastes.

SCOPE business imaging participates in Cartridges 4 Planet Ark by having a recycling facility available to encourage our clients to recycle their used imaging consumables.

For those clients who use a minimum of 3 imaging consumables (toner bottles, laser cartridges, drum units, fuser kits, inkjets etc) from ANY fax, photocopier or printer) and wish to work directly with Planet Ark, they are able to register their business to utilise this free service directly through the Close the Loop® website.



## Providing the Essentials of Imaging – Just Ask Our Customers

 <b>HALE SCHOOL</b>	Hale School - Sally Leonhardt Wembley Downs - Telephone: 9347 9777
	Calibre Projects – Ali Kiafar Perth – Telephone: 9265 7000
	Jackson McDonald Lawyers – Robin Kay Perth – Telephone: 08 9426 6611
	Georgiou—John Galvin Osborne Park—08 9200 2500
	Konekt—Paul Coton West Perth—Telephone 08 9219 7222



### Head Office

80 Hasler Road  
 Osborne Park WA 6017

Ph: 08 9201 3000  
 Fax: 08 9242 1850

### Bunbury Office

Unit 10, Block E  
 (Cnr Albert Road and Albert Lane)  
 Homemaker Centre  
 42 Strickland Street  
 Bunbury WA 6230

Ph: 08 9721 4288

